

ROUTE 30 DEMONSTRATION PLAN DESIGN CHARRETTE

WELCOME!



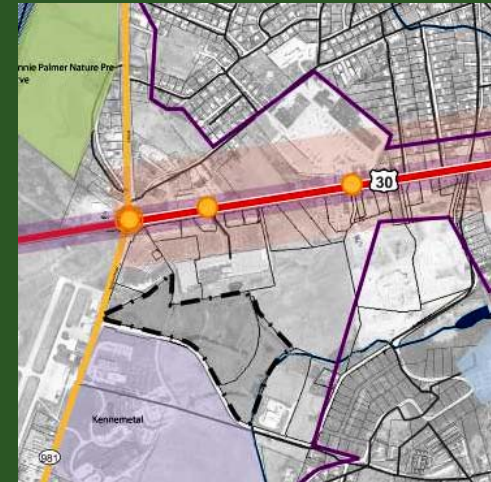
ROUTE 30 MASTER PLAN

The Smart Growth Partnership of Westmoreland County

October 22, 2007

CHOOSING A DEMONSTRATION PLAN SITE

Phase 2: THE DEMONSTRATION PLAN

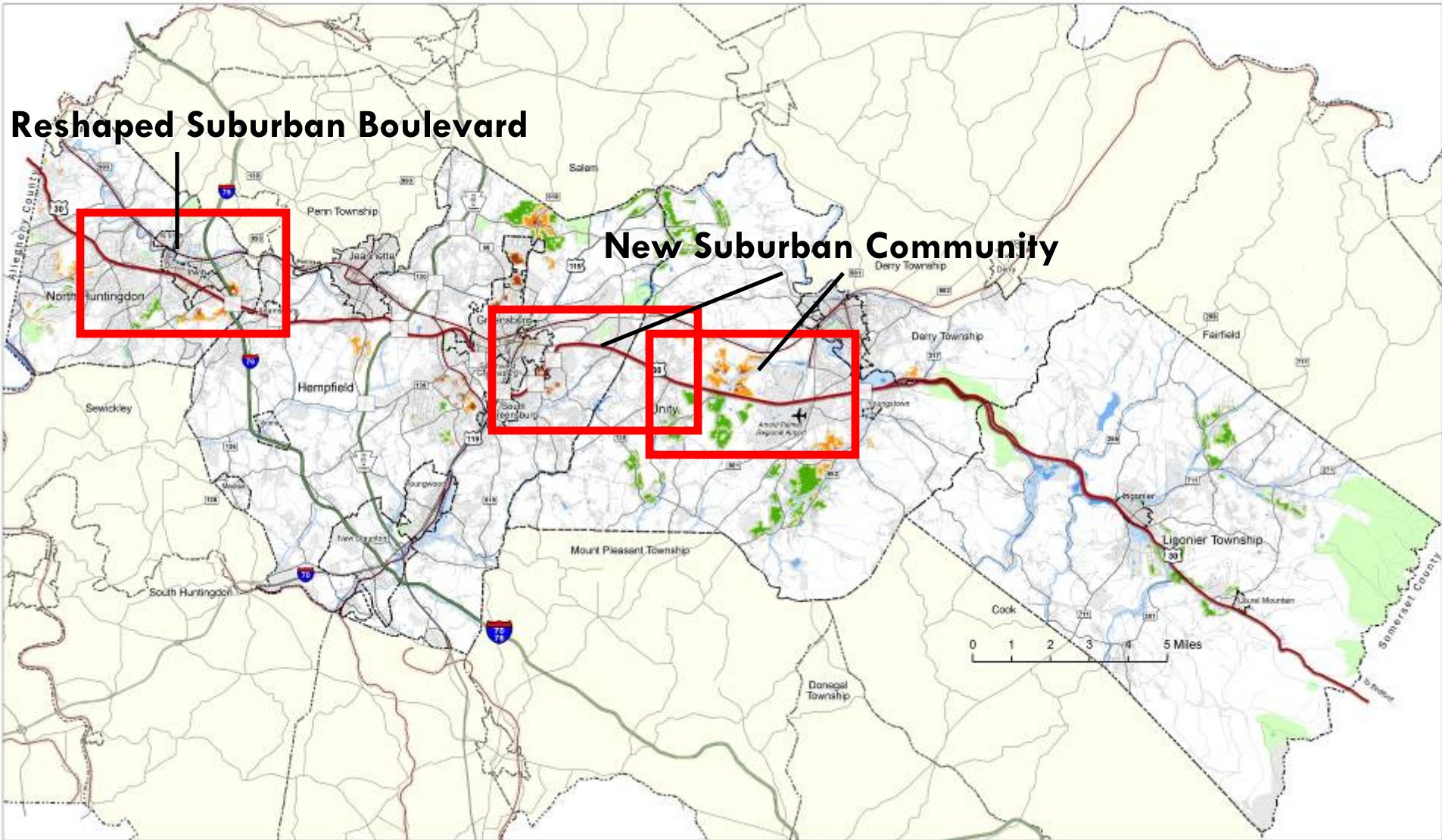


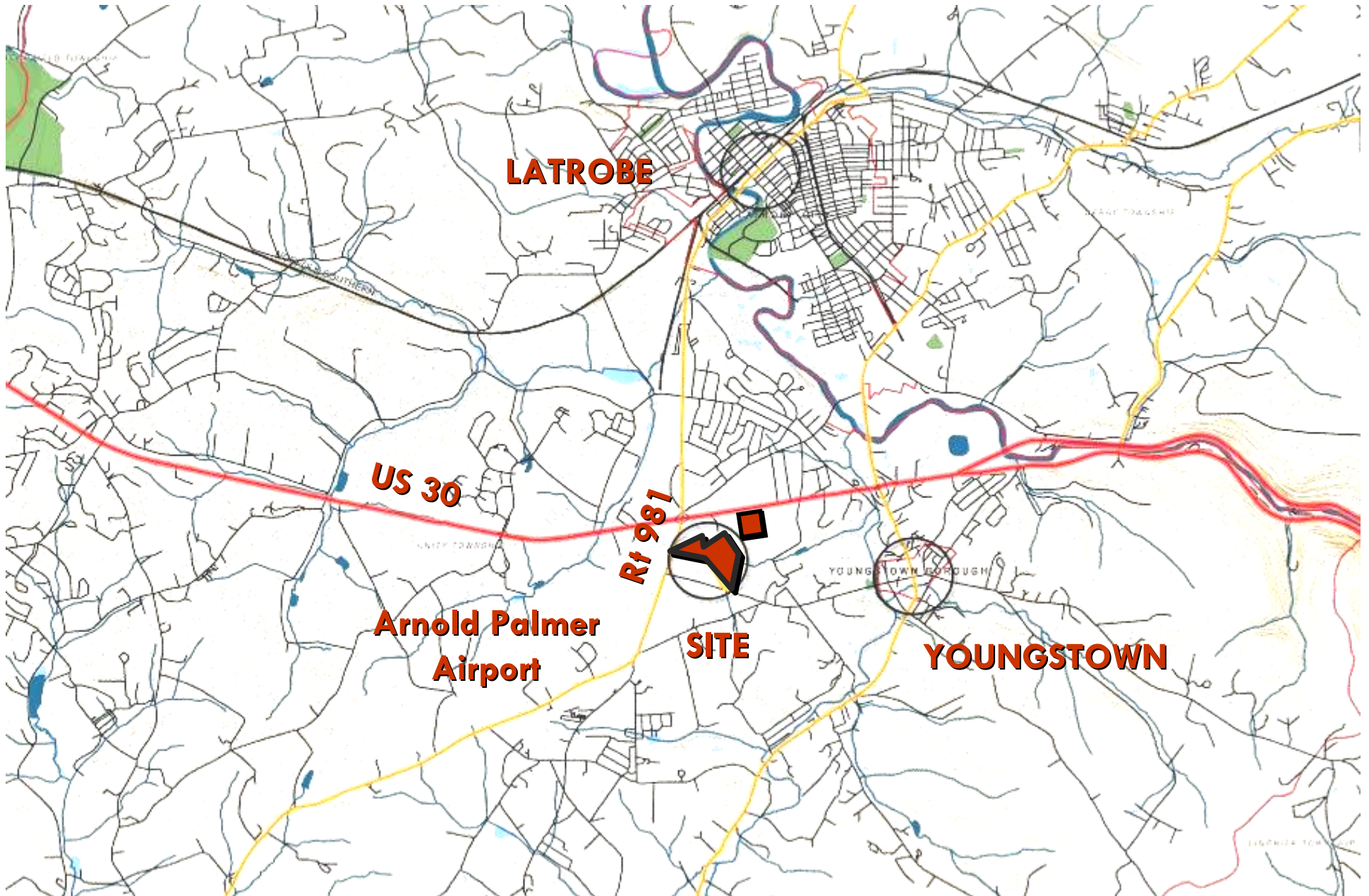
- Develop transferable solutions for the whole corridor
- Incorporate design elements from Phase 1: Walkability, Accessibility, Quality
- Week-long Design Charrette
- intensive work session on the Demonstration Plan

Criteria – You're the Developer

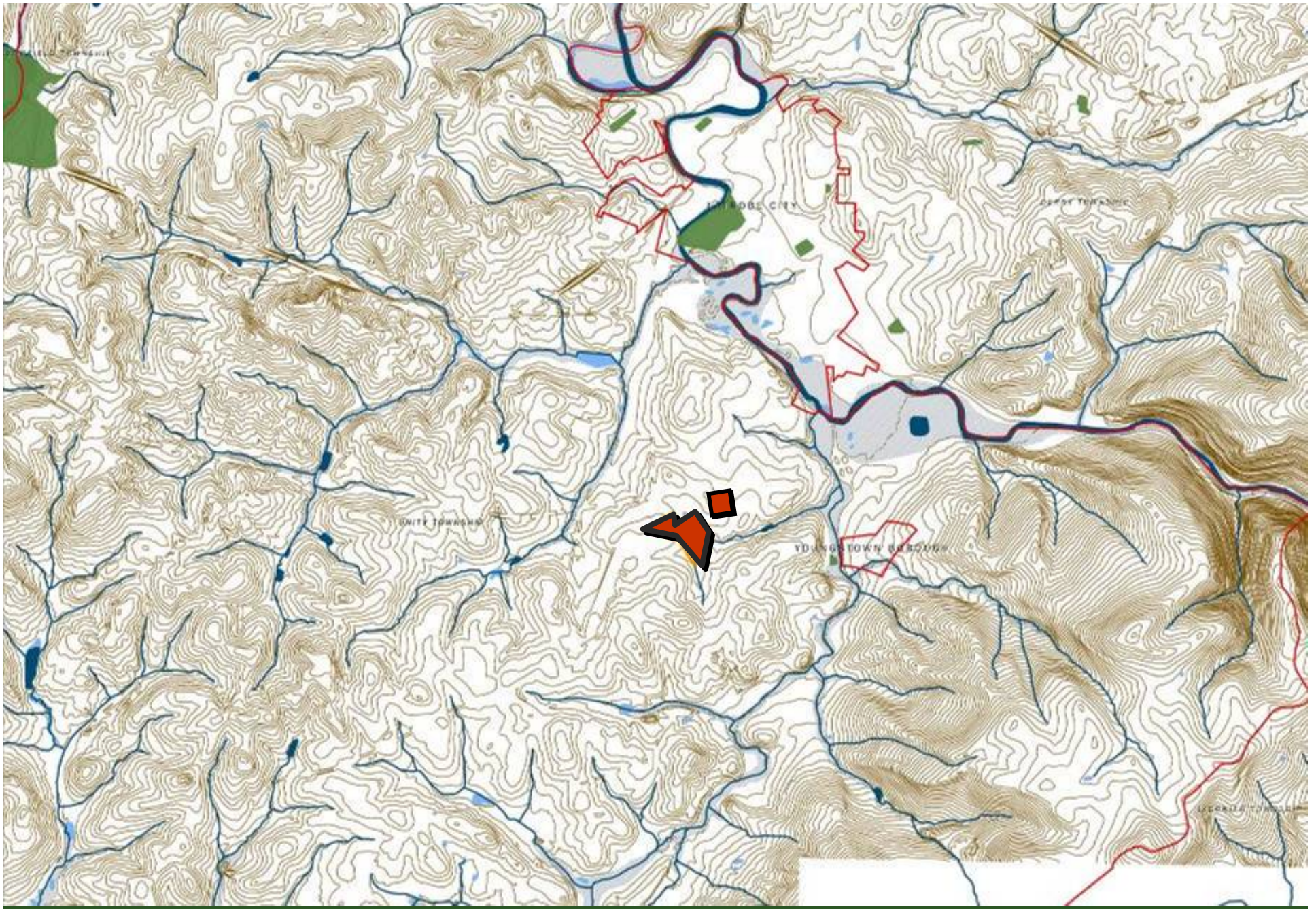
- **Transferability of study process to other communities**
 - How could this process/plan apply to my community?
- **Level of engagement/ buy-in**
 - Who are the key stakeholders? Will they engage in this process?
- **Environmental constraints**
 - Are there any extraordinary site conditions (i.e. topography, water)?
- **Land ownership/availability**
 - What's happening on the land now? Coming 5 years?
- **Transportation**
 - What are the transportation issues? Is the site accessible?
- **Market opportunities**
 - Can the market support new development at this location? Alternatively, is it reasonable to expect new development in this area?
- **Politics**
 - Is the local political climate favorable to smart growth concepts?
- **Feasibility**
 - Are the costs to do development at this location too high?
- **History**
 - Do past attempts at development on the site limit current opportunities to develop?
- **Development Type**
 - What kind of development can occur at the site? Residential, Commercial, Business office or Mixed Use?

Potential Demonstration Plan Study Areas

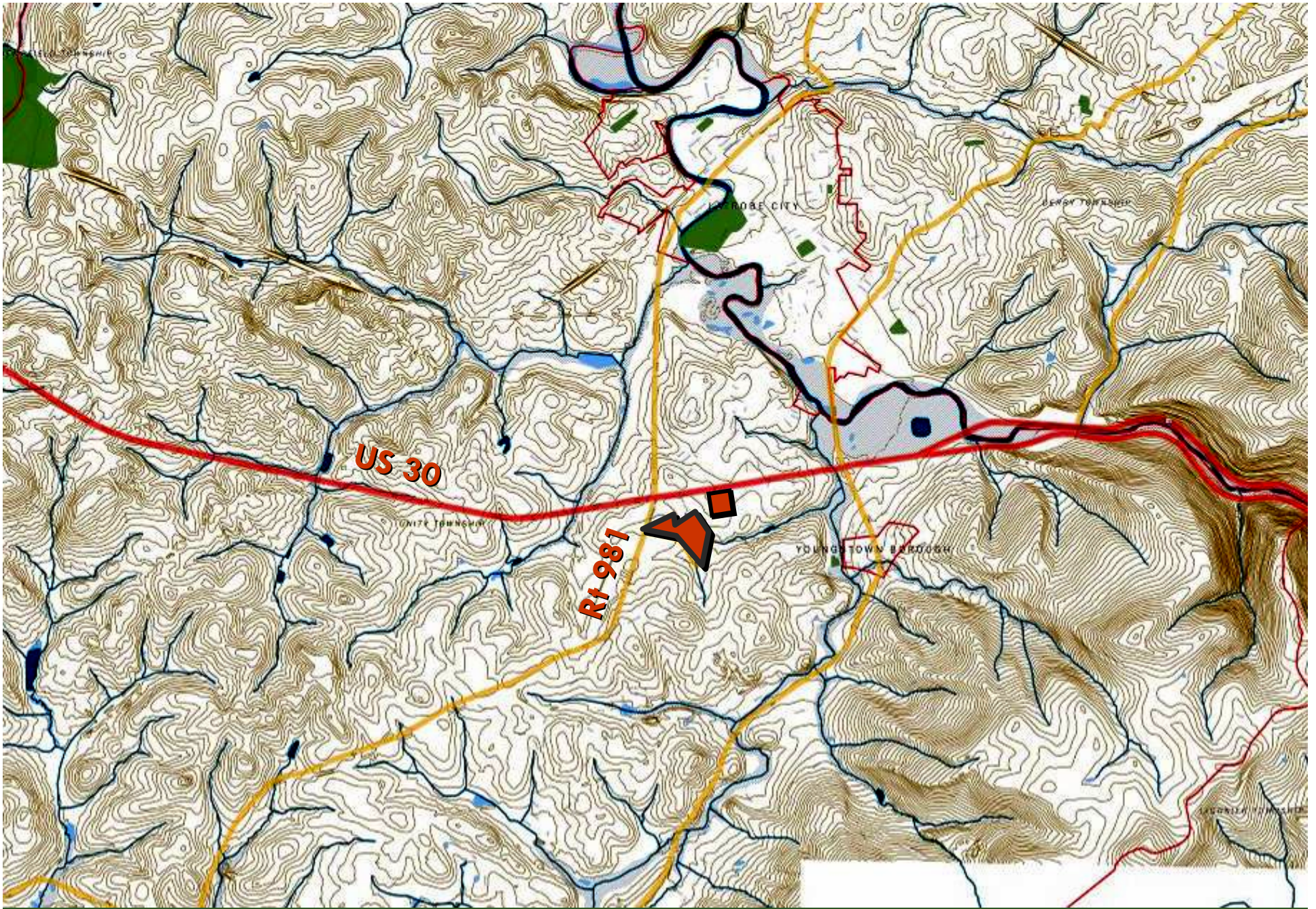




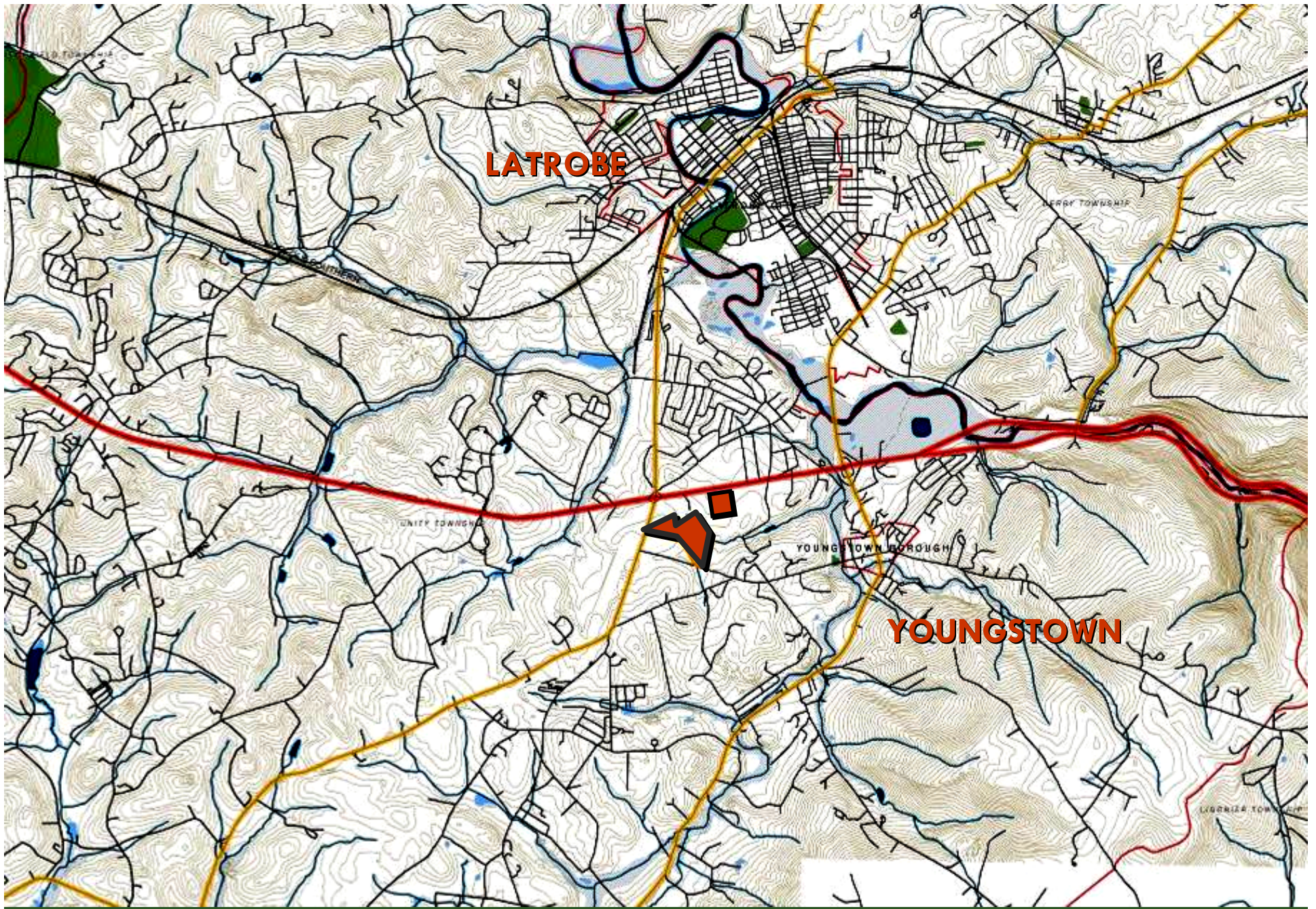
Demonstration Plan Site



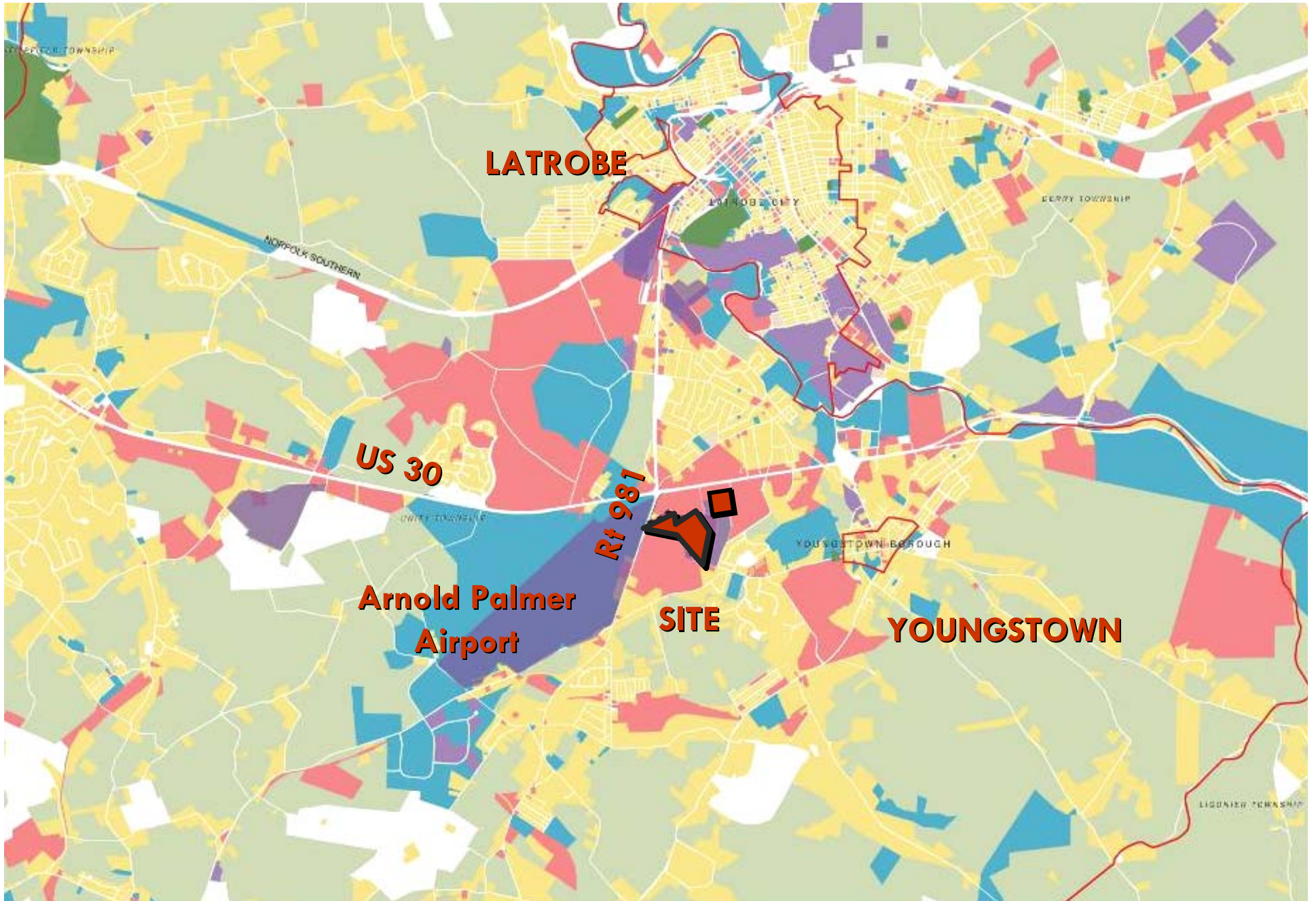
Topography



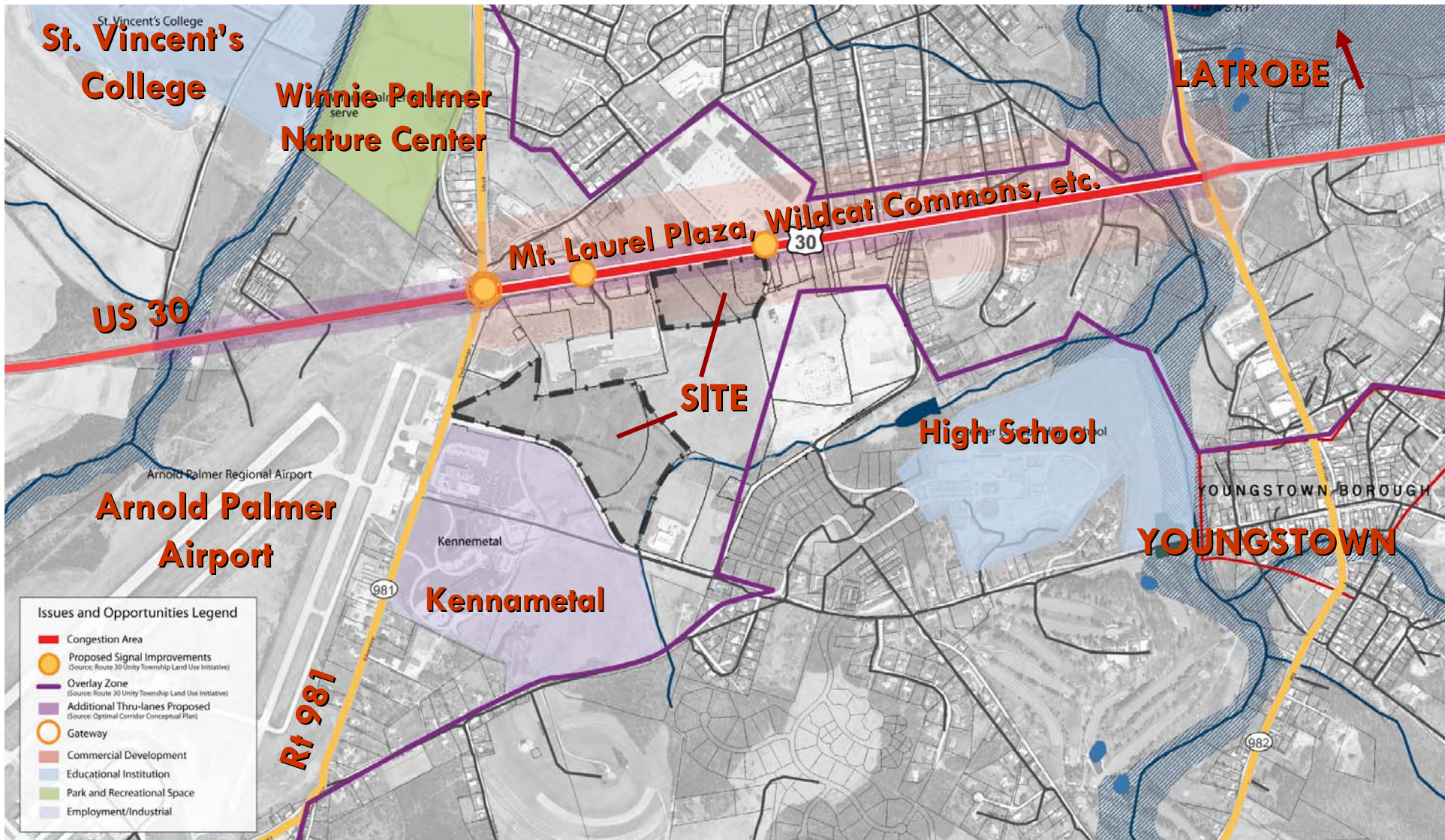
Major Throughways



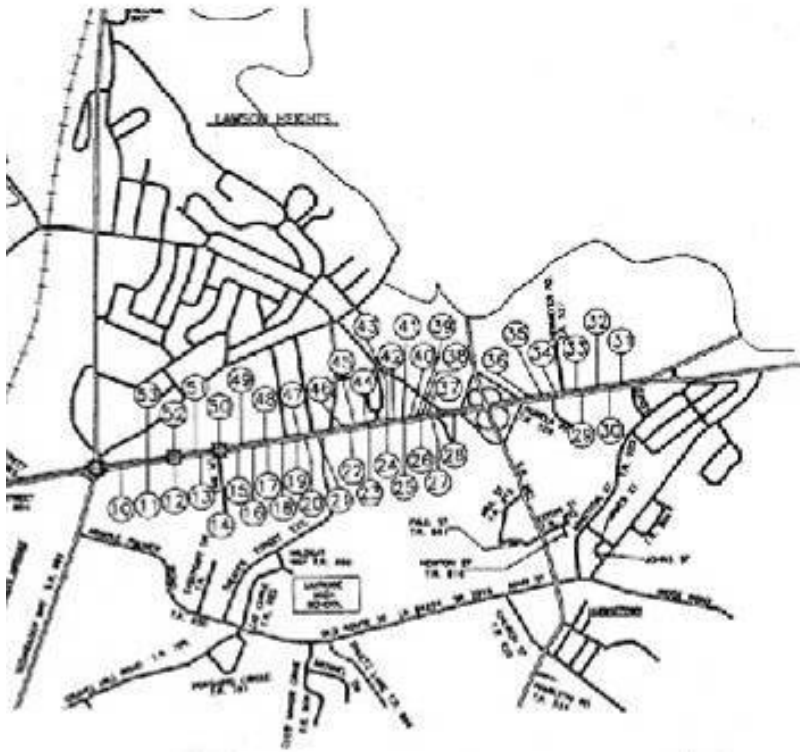
Settlement



Land Use



Context



Legend



5A- Provide additional turn lanes at Route 30 and PA 981 intersection
 Source: PennDOT Unity Twp Traffic Analysis Study & SPC Transportation Improvement Plan



5B- Provide additional eastbound and westbound through lanes
 Source: PennDOT Unity Twp Traffic Analysis Study & SPC Transportation Improvement Plan

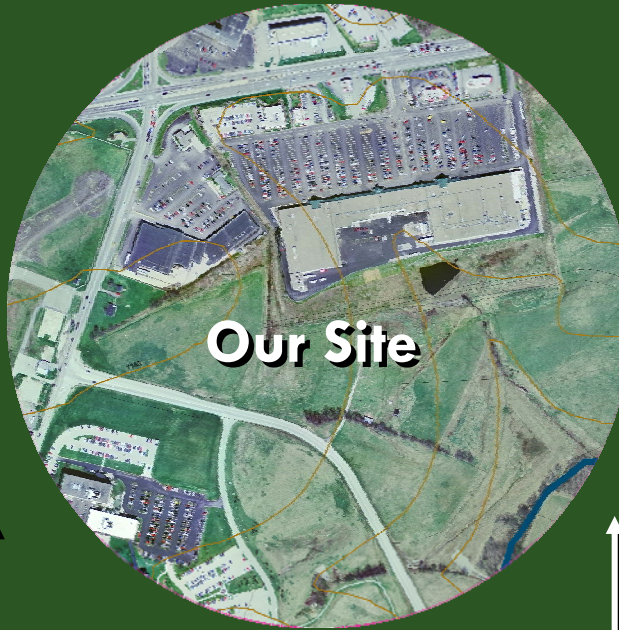


5C- Install traffic signal for eastbound movement at PA 217
 Source: PennDOT Unity Twp Traffic Ar

Roadway Improvements



A Comparison of Scale



10 minute walk



WHAT DO YOU WANT TO SEE?



VISIONING EXERCISE

TOTAL TIME: 1 hour (8pm-9pm)



GOAL: Envision the site and surroundings in 30 years

- Work at your tables around maps of the site and surrounding area
- Work as a group – listen carefully to each other
- All ideas are welcome – Facilitators will record them
- Mind the time – listen for updates
- Be creative & HAVE FUN!

VISIONING EXERCISE

PART 1: Describing the Vision: (15 minutes Total)

CONTEXT MAP

- Look at the map of the area around the site
- Give ideas for what you'd like to see happen in the area around the site in 30 years
- Facilitators will record the ideas on the maps



VISIONING EXERCISE

PART 2: Designing the Vision: (35 minutes Total)

SITE MAP

Connections & Open Space (15 minutes)

- Use your black markers to show desirable connections within the site & to surrounding areas,
- Use your green markers to show areas that you would like to see preserved as open space.

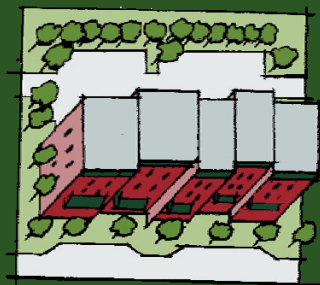
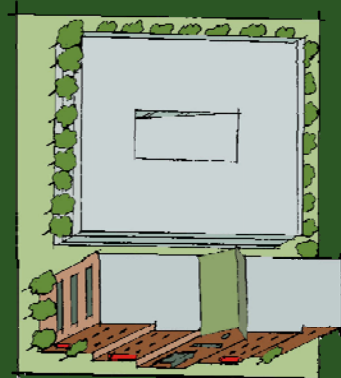


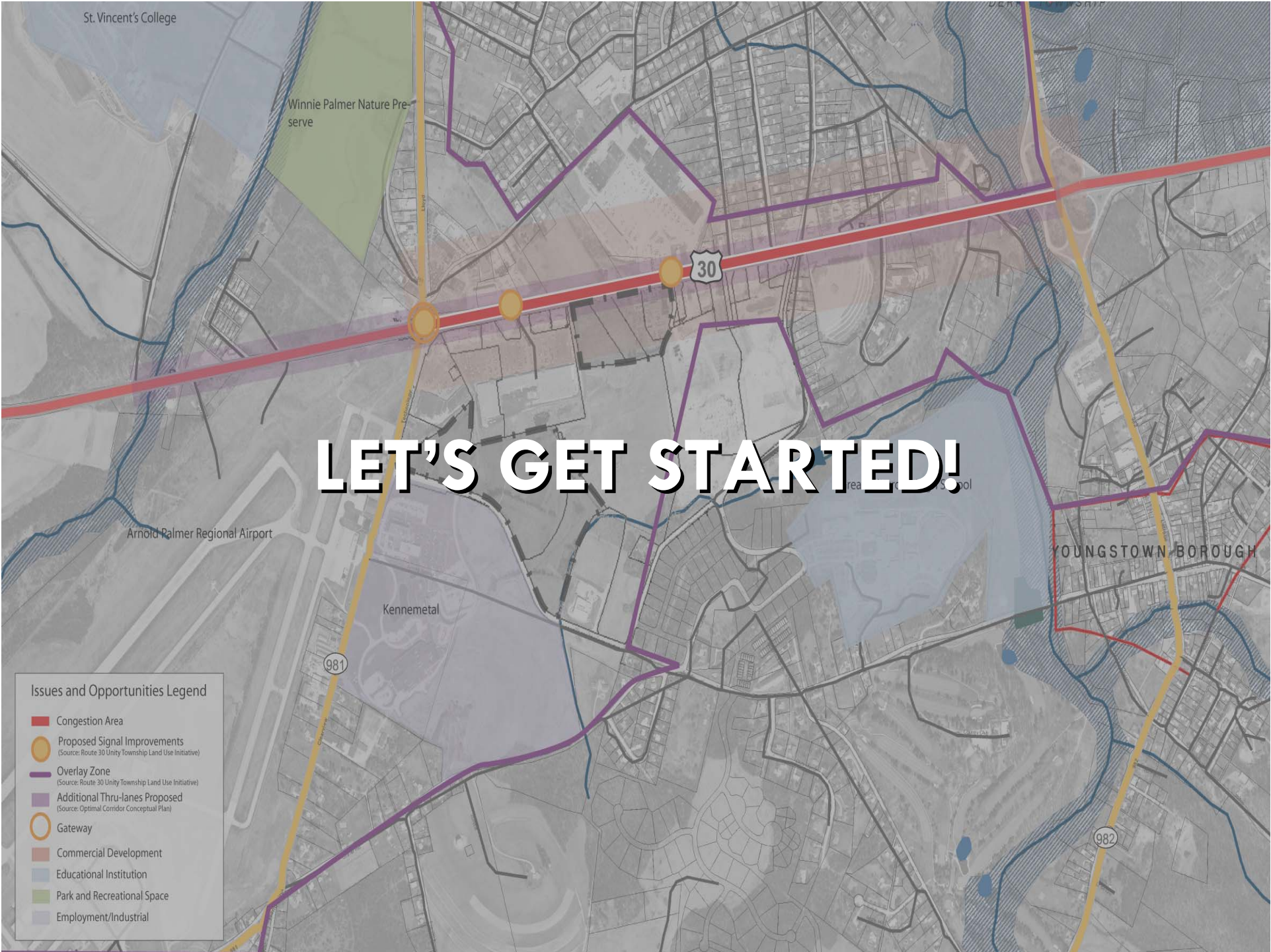
VISIONING EXERCISE

PART 2: Designing the Vision: (35 minutes Total)

Buildings (20 minutes)

arrange the building “chips” wherever you feel it would be best in order to build your vision for the site in 30 years.





NEXT STEPS

TUESDAY:

- Stakeholders 10:30AM – 6:00PM

WEDNESDAY:

- Technical Team 9:00AM-10:30 AM
- Stakeholders 10:30 AM – 6:00 PM
- PUBLIC OPEN HOUSE 6:00 PM – 7:00 PM
- PUBLIC WORKSHOP 7:00 PM – 9:30 PM

THURSDAY:

- Technical Team Drop In 3:00 PM – 6:00 PM

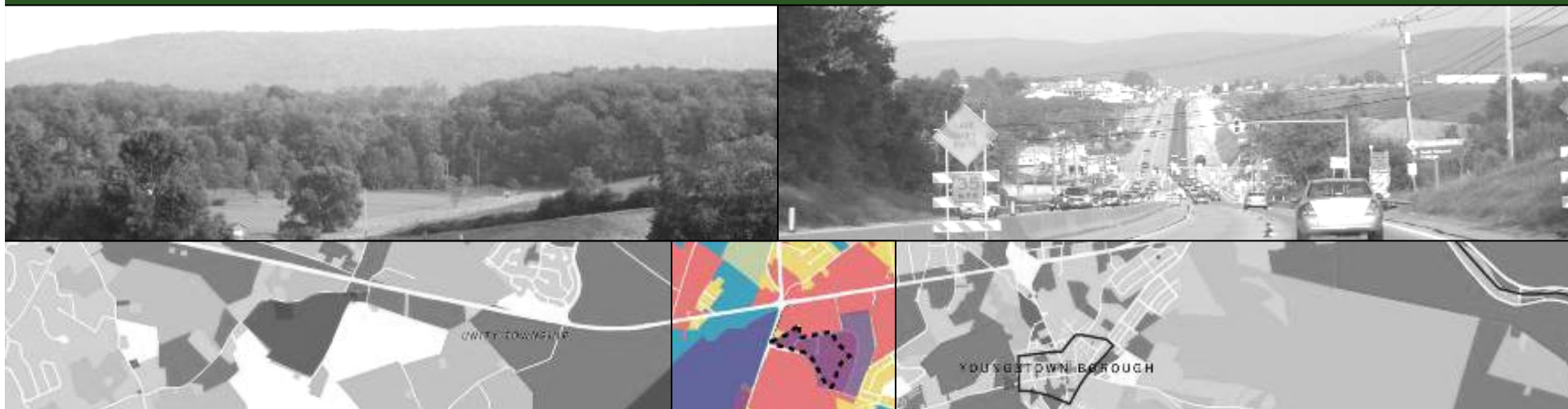
FRIDAY:

- PUBLIC PRESENTATION 2:00 PM – 4:00 PM



ROUTE 30 DEMONSTRATION PLAN DESIGN CHARRETTE

THANK YOU !



ROUTE 30 MASTER PLAN

The Smart Growth Partnership of Westmoreland County

October 22, 2007